

# STRATEGIES TO MAXIMIZE FUNDING UNDER THE STUDENT-CENTERED FUNDING FORMULA (SCFF)

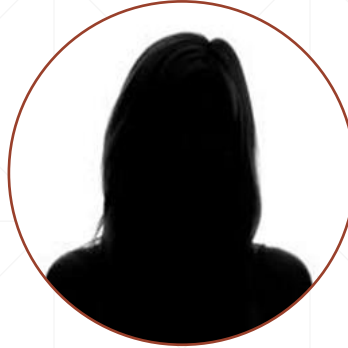
---

ACBO INSTITUTE I - GROUP PROJECT  
March 8, 2024

# Our Team



Kimberly Freitas, Associate Director  
Business & Fiscal Services  
Merced Community College District



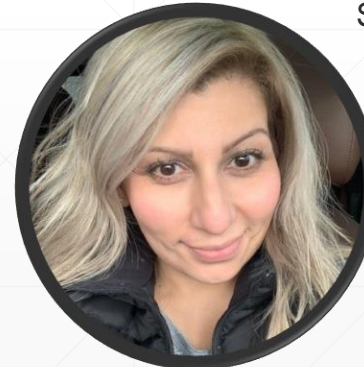
Michelle Anaya, Director  
Fiscal Services | Business Services  
Gavilan College



Yanely Pulido, Director  
General Services  
San Mateo Community College District



Melissa Ericsson, Director  
Fiscal Services  
College of the Siskiyous



Rafaela Cisneros, Budget Analyst  
Facilities Planning & Construction Department  
Kern Community College District

# Our District – RMMKY Community College District

- Single College District
- Existing State Approved Center
- Urban area
- Student Demographics
  - 11,625 total FTEs
    - 59.8% female, 38.6% male
    - 64% Hispanic
    - 17.7% White Non-Hispanic
    - 8.3% Asian
    - 3.4% Multi-Ethnic
    - 3.4% African-American
    - .5% American Indian/Alaskan Native
    - .4% Filipino
    - .3% Pacific Islander



# Increase enrollments in the Incarcerated Student Program



## Action Plan

- Increase college access to incarcerated individuals
- Increase FTES by 25% (50 FTES) FYE 2024-25



## Responsibility of

- Program Services Coordinator, with support from financial aid advisors, counselors, instructional faculty, and ITS



## Fiscal Impact

- \$366,296.50 increase to Base Allocation



## Resources Needed

- Dedicated Program Services Coordinator
- Existing financial aid advisors, counselors, faculty and IT resources
- Informational and course materials



## DEIA Implication

- Equity in Access: Increase the participation and completion of justice-involved and justice-impacted students



# Increase Financial Aid recipients for Pell & Promise Grants by 400 headcount

## Action Plan

- Provide outreach to community high schools
- Provide inreach on campus
- Liason with outside agencies

## Responsibility Of

- Student Services Area, Financial Aid Department

## Fiscal Impact

- \$495,484 increase in Supplemental Allocation

## Resources Needed

- New position, Outreach Coordinator at a cost of \$109,610 annually
- Financial Aid Advisor
- Workshop and informational supplies/materials

## DEIA Implication

- Increase registration and financial aid recipients for disadvantaged students
-

# Engage Local High Schools With the Goal Of Setting Up CCAP Agreements

## Action Plan

- Create CCAP agreements with local high schools to increase Special Admin Credit FTEs

## Responsibility Of

- Vice President of Academic Affairs, Department Dean, Director of Dual Enrollment

## Fiscal Impact

- Short Term – increase FTEs for Fall and Spring by 100 (~\$734K revenue increase). Focus on juniors and seniors
- Long Term – increase FTEs to 240 ongoing (~\$1.76M revenue increase). Focus on beginning programs at freshman level to complete degree or certificate upon graduation.

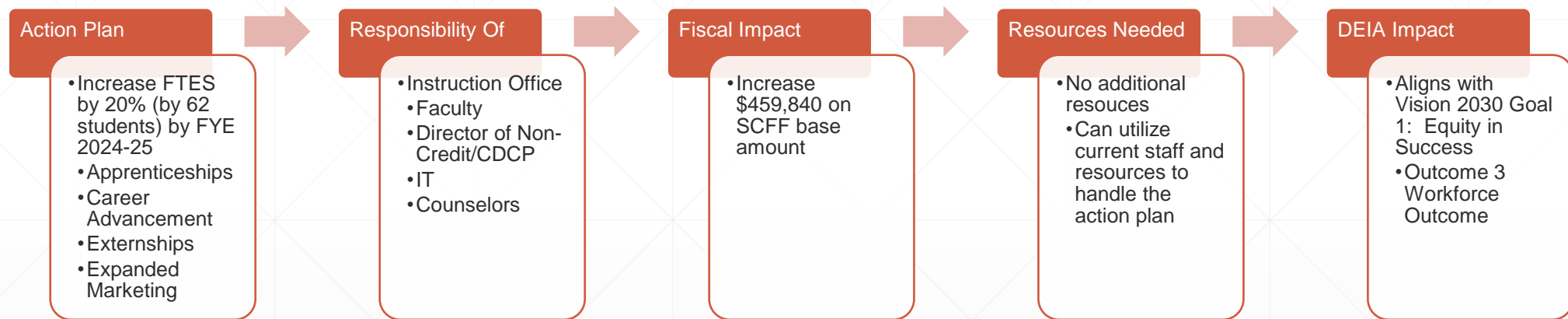
## Resources Needed

- Director of Dual Enrollment, Counselor, supplies and course material

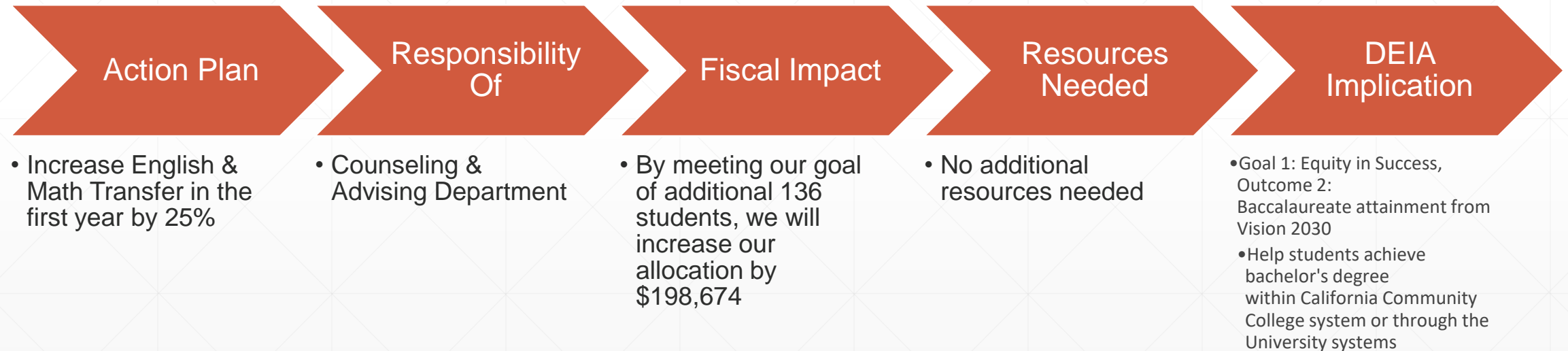
## DEIA Implication

- Goal 2: Equity in Access
- CCAP – College and Career Access Pathways
- Program will target students who may not be college bound. Expose students to college while in high school. Remove barriers by allowing them to take courses during normal school day and by providing course material

# Career Development & College Preparation (CDCP)

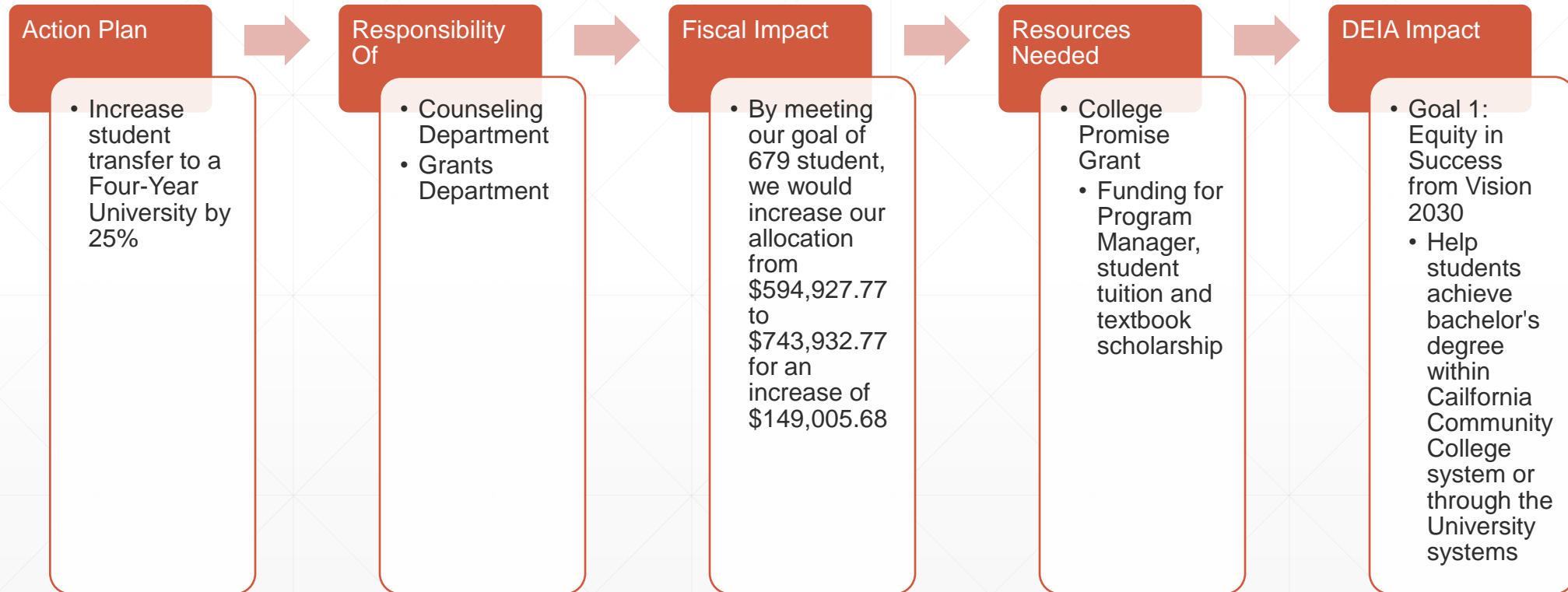


# Increase Transfer Level Math & English





# Increase Transfer to Four Year University



## **Closing Statement: In order for our District to increase our Student Center Funding Formula will focus in the improvement of the following:**



- Incarcerated Student Program
- Dual Enrollment
- Career Development and College Preparation
- Financial Aid
- Pell Grant
- Promise Grant
- Transfer Increase to 4-year Universities
- Transfer English & Math in First Year

**Any Questions?**



**THANK YOU!**