



California Community Colleges Chancellor's Office Finance and Facilities Planning Division

Mario Rodriguez, Vice Chancellor
Frances Parmelee, Assistant Vice Chancellor

*Wednesday, May 24, 2017
2017 Spring ACBO
Conference*



CALIFORNIA COMMUNITY COLLEGES

Budget Update

FY 17-18 May Revise



CALIFORNIA COMMUNITY COLLEGES

Finance and Facilities Planning Division

Strengthening our own internal structure

- Refining the way we do our business
- Building our resources to benefit everyone

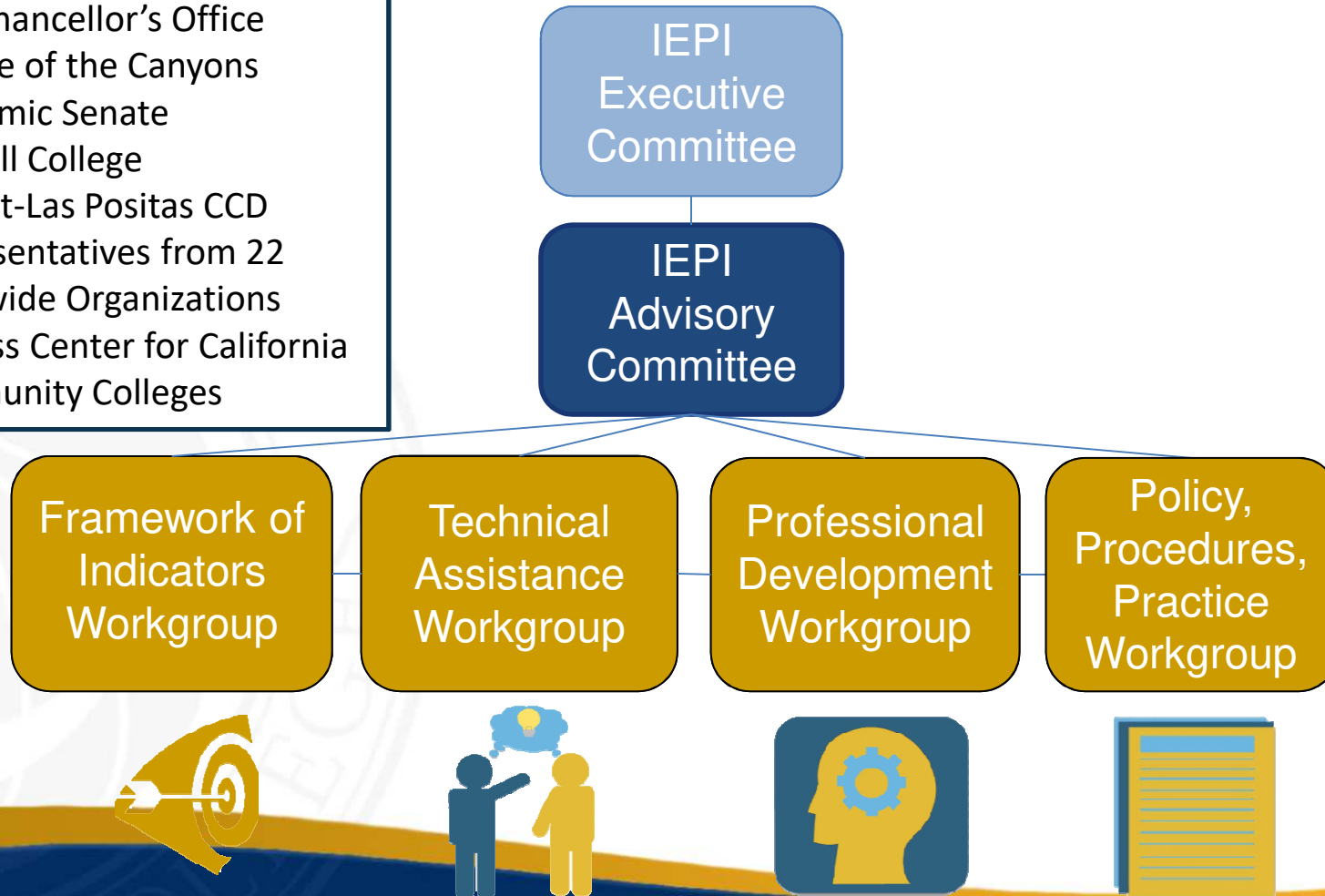


CALIFORNIA COMMUNITY COLLEGES

IEPI Structure

Composition of Partnership

- CCC Chancellor's Office
- College of the Canyons
- Academic Senate
- Foothill College
- Chabot-Las Positas CCD
- Representatives from 22 Statewide Organizations
- Success Center for California Community Colleges



ALL ON PLN

- Data Disaggregation
- Integrated Planning
- Strategic Enrollment Management (In Development)

ASK Applied Solution Kit

Data Disaggregation (DD)

Data Disaggregation ASK

Data Disaggregation is Critical
Data disaggregation (DD) has been a topic of research for years. Now, it is playing a more prominent role in supporting student success issues such as student equity, retention, and decision-making. DD can help us understand student populations. The information between subgroups, which are often performing so much better or worse than the overall group, can tell us a lot about the lower performing subgroup.

Data Disaggregation ASK

One may read the words "data disaggregation" and think, "oh, that's about, but this is not the case and student instruction can see patterns in student experience. DD ASK tools are built around the Basic Skills Cohort Program impact; disaggregating student college programs; analyzing resources will continue to be the main goal of the DD ASK. Additionally, we hope the results of the disaggregation. We look forward to extended and improved then.

Contact Us

ASK@ccpccgroup.org

Access the Data

Visit the PLN website [pro](#)



CALIFORNIA COMMUNITY COLLEGES
CHANCELLOR'S OFFICE

ASK Applied Solution Kit

Strategic Enrollment Management (SEM)

Strategic Enrollment Management ASK

How Your College Could Benefit from Strategic Enrollment Management

California Community Colleges face many challenges. As the student population becomes more diverse, institutions must continue to adapt to the changing needs of the communities they serve. Many more, still, our institution

The SEM Development

Phase I: Information
During this phase, the results of a SEM study are shared with the committee. This phase also

ASK Applied Solution Kit

Integrated Planning (IP)

Integrated Planning ASK

How Your College Could Benefit from Integrated Planning

By implementing Integrated Planning (IP) and working across departments, institutions can potentially decrease redundant efforts, increase efficiency, and improve student outcomes. Through integrated planning, institutions can increase institutional effectiveness, a key component in accreditation evaluation. What's not to love about improving your college's accreditation processes?

A Deeper Look at the Integrated Planning ASK

After meeting with nearly 200 California Community College professionals and conducting an intensive literature review, the resources for the initial launch were created and selected by subject matter experts. Some of the IP ASK materials include: templates, rubrics, dashboards, literature, and reporting tools.

Moving forward, the creators of the IP ASK will continue to actively search for and create additional resources. Before items are posted, they will be reviewed by subject matter experts. If you have innovative or useful integrated planning resources that you would like to share, please contact an IP ASK Project Lead using the email address below!

Integrated planning is the linking of vision, priorities, people, and the physical institution in a flexible system of evaluation, decision-making and action. It shapes and guides the entire organization as it evolves over time and within its community.

—Society of College and University Planning



CALIFORNIA COMMUNITY COLLEGES

Fiscal Standards & Accountability Unit

Elias Regalado, Director

Attendance Accounting & Residency

Natalie Wagner

Chay Yang

Fiscal Standards

Christine (Teena) Atalig

Michael Yarber

Fiscal Accountability

Tracy Britten



CALIFORNIA COMMUNITY COLLEGES

Fiscal Standards & Accountability Unit

General Updates

- Completed 2016-17 Second Period CCFS-320 Report collection and FTES analysis
- SB 68 (Lara)
- Update statutory provisions related to Nonresident Veterans In-State Tuition eligibility (federal VACA Act)



Fiscal Standards & Accountability Unit

FS Memorandums

- Emergency Conditions Memorandum
- FS16-10: Implementation of SB 1379 (Part-Time Faculty Negotiations) ***Certification due July 14, 2017***
- FS17-01: Student Health, Parking, and Transportation Fees
- FS17-02: 2016-17 Contracted District Audit Manual



Fiscal Standards & Accountability Unit

FS Memorandums (con't)

- FS17-03: Part-Time Faculty Programs (Office Hours and Health Benefits) ***Forms due June 1, 2017***
- FS17-04: Gann Limit Memo and Worksheet
- FS17-05: 2015-16 SSSP Findings
- FS17-06: Adult Education Block Grant (AEBG) Accounting Advisory



Fiscal Standards & Accountability Unit

Fiscal Standards & Accountability Committee

- Update of the Auxiliary Organizations Manual
- Working with WED Division to increase accountability over the Apprenticeship Program
- Developing a new Audit Web Portal for submission of all audit findings



Fiscal Standards and Accountability Unit

QUESTIONS?



CALIFORNIA COMMUNITY COLLEGES

Fiscal Services Unit

Wrenna Finche, Director

Apportionment Specialists

Randy Fong

Patricia Servin

Jubilee Smallwood

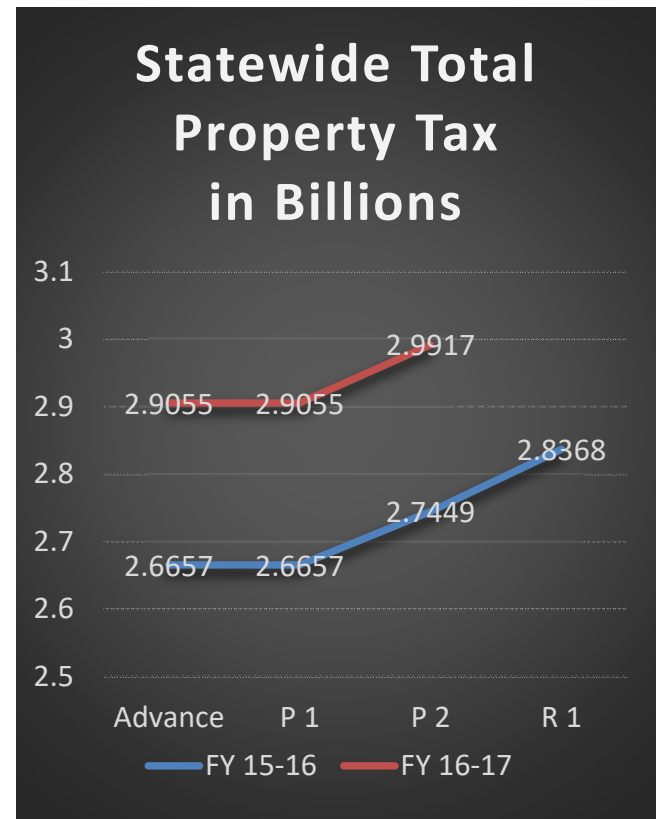


CALIFORNIA COMMUNITY COLLEGES

Fiscal Services Unit FY 16-17

Second Principal Apportionment

- \$86.2 M, 3%, increase in statewide property tax
- \$22.5 M, 5% increase in enrollment fees
- FTES revised to include FY 15-16 audit adjustments
- Deficit Rate approximately 0.1%



Fiscal Services Unit

FY 16-17

Second Principal Apportionment

- 24 Districts are in Stability Restoration
- 9 of the Districts in Restoration have restored and qualify for some growth.
- 27 Districts qualify for growth.



Fiscal Services Unit FY 15-16 Recalculation

- Additional revision in June 2017
- Release date primarily driven by FTES audit adjustment data availability



Fiscal Services Unit

FY 17-18

Proposed per May Revise

State General Apportionment

- Growth Rate = 1%
- Base Increase = \$183.6 M
- COLA = 1.56%

Categorical Apportionment

- Blended Funding for SSSP/SE/Basic Skills
 - Single program name
 - Single row on reports
 - current funding sources



CALIFORNIA COMMUNITY COLLEGES



Fiscal Services Unit

QUESTIONS?

apportionments@cccco.edu



CALIFORNIA COMMUNITY COLLEGES



Facilities Planning Unit

Carlos Montoya, Director

Facilities Planning

Harold Flood

Cheryl Larry

Sandra Melching

Hoang Nguyen

Eric Thorson

Lan Yuan



CALIFORNIA COMMUNITY COLLEGES

Facilities Planning Unit

Prop 51 - Spending Plan

- Proposed Spending
 - \$750M (\$692) for the first year
 - Split into
 - \$304M in 2017-18
 - \$388M in 2018-19
 - \$750M for the second year
 - Moved to 2019-20
 - \$500M (\$550) for the third year
 - Moved to 2020-21



Facilities Planning Unit

Prop 51 - Spending Plan

- 2017-18 Governor's Budget
 - Included in the Governor's Budget, as April Finance Letters
 - 9 projects
 - \$11.67M in state funding for Preliminary Plans
 - \$304M in total state funding for proposed projects
- 2018-19 Spending Plan
 - Resubmit remaining projects approved by Board of Governors
 - Currently 20 projects and \$388M in state funding



Facilities Planning Unit

Prop 51 - Spending Plan

2017-18 Governor's Budget
April 1, 2017

BOG Cat.	Description	Actual Project Funding	# of Projects
A	Health and Safety	\$150,290,000	3
B	Instructional Growth	\$121,863,000	4
C	Instructional Modernization	\$31,861,000	2
D	Complete Campus	\$0	0
E	Institutional Growth	\$0	0
F	Institutional Modernization	\$0	0
		\$304,014,000	9



CALIFORNIA COMMUNITY COLLEGES

Facilities Planning Unit Physical Plant and Instructional Support

- \$135.8M in May Revise
 - Available P2 in 2018-19
 - Serves as a contingency against future reductions in Proposition 98



CALIFORNIA COMMUNITY COLLEGES

Facilities Planning Unit 2017-2018 Proposed Budget

- \$46.5M Proposition 39 proposed budget
 - \$38.96M for district facilities projects
 - \$5.95M Workforce and Economic Development
 - \$1.59M for consultant services



Facilities Planning Unit

Proposition 39

- Year 5 (FY 17-18) Call for Projects
 - **February 17** - Preliminary project lists (Done)
 - **April 7** - Energy savings and cost calculations, preliminary Form B, and Incentive Applications
 - **June 9** - Utility incentive approval
 - **June 30** - State budget adoption and funding finalized
 - **July 10** - Year 5 funding submittals



Facilities Planning Unit

Proposition 39

- Program Deadlines
 - **May 11, 2018** - All Prop 39 funds must be encumbered or returned to the state
 - **June 28, 2019** - All funded projects will need to be installed and completely closed out
 - All Prop 39 funds should incorporate these deadlines into project planning
 - “Drop-dead” dates without available extension



Facilities Planning Unit

Proposition 39 - Close-out Process

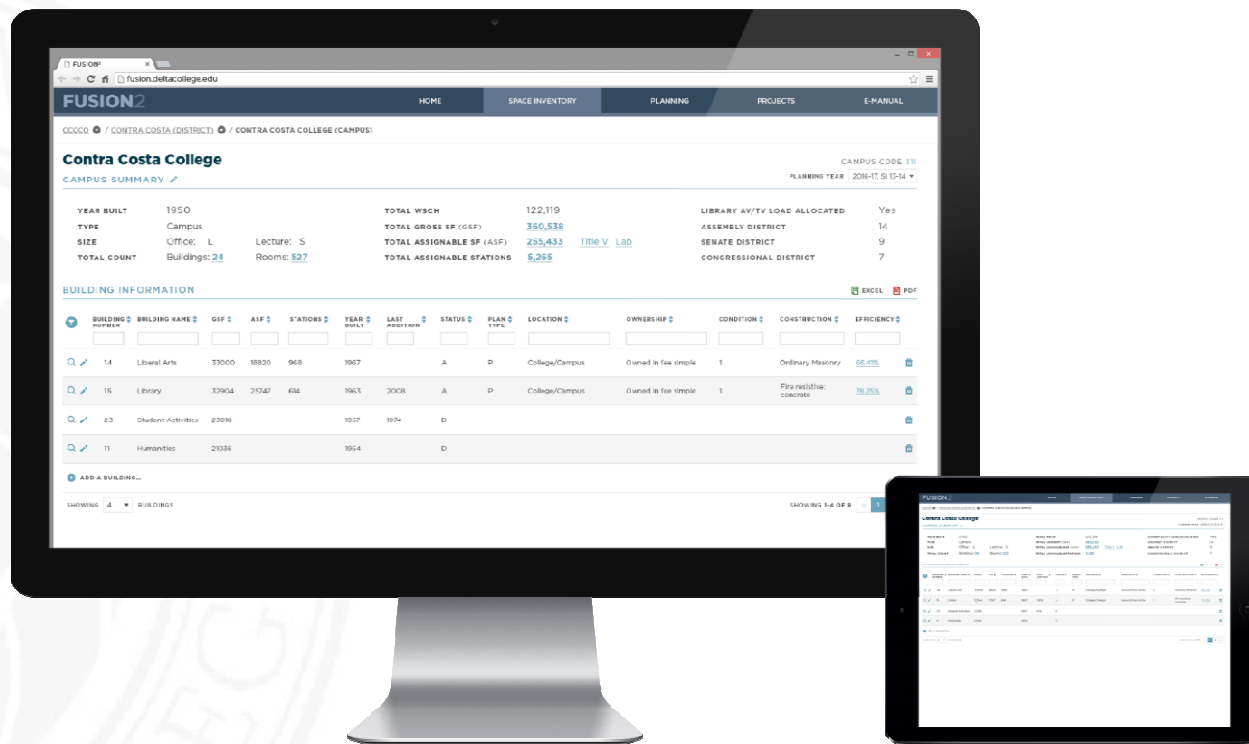
After the Prop 39 project is installed

- Notify your utility representative that the project has been installed and is operational (or notify NAM in POU territories)
- **Utility** will perform field verification inspection and **approve incentives**
- **IR** – Installation Report issued by utility with approved incentives and costs
- **Form J** – Job Creation Tracking Report completed and signed by contractor(s)
- **Form F** – Final Project Verification Report with job numbers and final project costs signed by District
- **Final Form B** – Yes, again!
 - Project budget changes
 - Final Prop 39 allocation and SIR
 - Signed by District
 - Return to utility or NAM
- *Keep copies of Reports and Forms in your files for potential audit purposes!*



Facilities Planning Unit

FUSION2 - Progress



CALIFORNIA COMMUNITY COLLEGES

Facilities Planning Unit

Space Inventory 2.0

FUSION2

Home Assessment Space Inventory

Navigation Reports CCCC0 >> Allan Hancock Joint District

Allan Hancock Joint Community College District

PLANNING

DISTRICT SUMMARY

CEO:	Kevin G. Walthers Ph.D.	Contact Person:	Felix Hernandez Jr., Vice Pres	Total Gross SF:	706,550	Address:
Title:	Superintendent/President	Phone No.:	(805) 922-6966	Total Assignable SF:	440,708	
Approved Sites:	2	Buildings:	35 Rooms:	1,066	Total Assignable Stations:	9,077

Campus List				
Campus	Type	Size	ASF	OGSF
611 - Allan Hancock College	Campus with District Office	L	364,261	585,876
612 - Lompoc Valley Center	Center	S	76,447	120,674

Hide Campus List

LAND & LOCATIONS

Action	Description ▼	Acre ▼	Street Address ▼	City, State, Zip ▼	Type ▼
 	Allan Hancock College	112.60	800 South College Dr.	Santa Maria, CA	L - Land owned by district
 	Lompoc Valley Center	205.00	One Hancock Drive	Lompoc, CA	L - Land owned by district
 	Vandenberg AFB Center	0.00		Vandenberg Air Force Base, CA	I - Instruction location
 	X-Off Campus Locations (See Attached List)	0.00			I - Instruction location



CALIFORNIA COMMUNITY COLLEGES

Facilities Planning Unit

Local Assistance 2.0 District

Dashboard

- Provides single dashboard to access scheduled maintenance projects, Project Funding Proposals, and Plans for future years
- Track both state and local projects

Cabrillo Community College District

Category Filter ☒ SM ☐ HM ☐ OM

Local Assistance Summary						
	2015-16	2016-17	2017-18	2018-19	2019-20	2020-21
Total Planned			\$3,320,000	\$6,470,000	\$7,150,000	\$5,100,000
Total PFP Request			\$2,860,000			\$2,776,000
Total Funded	\$1,660,000	\$1,678,358				
Total Encumbered	\$0	\$0				

PROJECT SUMMARY FOR 2017-18

Add Project

Action	Priority	Project	Campus(es)	Category	Type	Building(s)	State Funds	Local Funds	Total Funds
Q →	1	Repair / Replace existing ridge vent & gutters bldgs. 500, 600, 700, 800 Phase II	Cabrillo College	SM	Roof	500 BUILDING	\$125,000	\$125,000	\$250,000
Q →	2	Paint interior / exterior bldgs. 900, 1100, 1500 phase I	Cabrillo College	SM	Exterior	900 COLLEGE CENTER	\$180,000	\$180,000	\$360,000
Q →	3	Replace flooring bldgs. 900, 1100 phase III	Cabrillo College	SM	Other	1100 GYMNASIUM	\$125,000	\$125,000	\$250,000
Q →	4	Repair / replace handrails building 1000	Cabrillo College	SM	Exterior	1000 LIBRARY/LRC	\$125,000	\$125,000	\$250,000
Q →	5	Water Storage tank re-lining	Cabrillo College	SM	Exterior	Campus-wide	\$125,000	\$125,000	\$250,000
Q →	6	900 Bldg. HVAC Controls & Equip. Repair/replacement phase I	Cabrillo College	SM	Mechanical	900 COLLEGE CENTER	\$250,000	\$250,000	\$500,000
Q →	7	Repair/replace Hvac controls & equipment bldg. 1500	Cabrillo College	SM	Mechanical	1500 EARLY CHILD NURSING	\$250,000	\$250,000	\$500,000
Q →	8	Repair / replace plumbing fixture valves interior buildings upper campus	Cabrillo College	SM	Mechanical	Campus-wide	\$250,000	\$250,000	\$500,000



CALIFORNIA COMMUNITY COLLEGES

Facilities Planning Unit

Local Assistance 2.0 Project Planning & Tracking

- Turn existing deficiencies into scheduled maintenance projects
- Single project template allows transition from planned project to funding proposal

PROJECT INFORMATION	
Project Title: Paint interior / exterior bldgs. 900, 1100, 1500 phase I	
Intent & Scope: The paint on the existing buildings, 900, 1100, 1500 have reached the end of life cycle and require new paint.	
Project Type: Exterior	Project Manager: Joe Nugent
More Project Details	
FUNDING	
STATE: 50% LOCAL: 50%	
Project Total: \$ 360000	State Funds: \$ 180000
Encumbered Funds: \$ 0	Local Funds: \$ 180000
Remaining Funds: \$ 360000	Local Only (not reported to FPU): <input type="checkbox"/>
Hide Funding Breakdown	
Permits and Fees <small>Architect/Engineer, Plan Check Fees, Misc. - 11% maximum</small>	9 % \$ 32400
Construction Costs	84 % \$ 302400
Inspection	1 % \$ 3600
Contingency <small>7% maximum</small>	4 % \$ 14400
Total	98 % \$ 352800

LOCATION DETAILS					
Campus(es): <input type="checkbox"/> District-wide OR Select Campus: Cabrillo College (411)					
Building(s): <input type="checkbox"/> Campus-wide OR Select Building: 3 items selected					
Campus	Building	Facility Age	Component Age	Facility Type	Discipline
411	900 COLLEGE CENTER (4)	55	55	Cafeteria	all
411	1100 GYMNASIUM (7)	55	55		
411	1500 EARLY CHILD NURSING (24)	41	41		



Facilities Planning Unit

Ad Hoc Reports Dashboard

FUSION2

Space Inventory

Reports

Sign Out

REPORTS DASHBOARD

+ Create Report

Common Reports

Deficiencies Costing > \$10K
Created: 3/11/2017
Last modified: 3/21/2017

Run

Copy

Buildings with Planned SM or CO Projects
Created: 3/12/2017
Last modified: 3/14/2017

Run

Copy

Planned Renovations at Older Instructional Facilities
Created: 3/16/2017
Last modified: 3/16/2017

Run

Copy

My Reports

Sort By:

Name

Created Date

Last Modified Date

5YP & PFPs by Campus
Created: 3/24/2017
Last modified: 3/24/2017

Run

Edit

Delete

ASF, OSF, Stations & Room Count
Created: 3/21/2017
Last modified: 3/27/2017

Run

Edit

Delete

Contra Costa Campus Summary
Created: 3/21/2017
Last modified: 3/31/2017

Run

Edit

Delete

Deactivated Buildings
Created: 3/24/2017
Last modified: 3/31/2017

Run

Edit

Delete

Deficiencies List
Created: 3/23/2017
Last modified: 3/31/2017

Run

Edit

Delete

SM Plan with Def
Created: 3/29/2017
Last modified: 3/30/2017

Run

Edit

Delete

The logo of the California Community Colleges, featuring a stylized 'C' and 'C' intertwined within a circular emblem.

CALIFORNIA COMMUNITY COLLEGES

Facilities Planning Unit

Ad Hoc Reports - Report Designer

FUSION2

Space InventoryReportsSign Out

REPORT DESIGNER

Run ReportSave & CloseCancel

Select Data

DISTRICTS>

CAMPUSES>

LA 5YP>

BUILDINGSv

Building Number☒

Building Name☒

Abbreviation

Outside SF

Room Count

Assignable Stations

Assignable SF

Ownership Type

DEFICIENCIESv

SM Plan with Def

District Columns

DISTRICTS District Code

Filters: EQUAL TO 020 OR EQUAL TO 310

☒ VisibleFilterMove UpMove Down

Campus Columns

CAMPUSES Campus Name

☒ VisibleFilterMove UpMove Down

CAMPUSES Campus Size

☒ VisibleFilterMove UpMove Down

CAMPUSES Assignable SF

☒ VisibleFilterMove UpMove Down

CAMPUSES Assignable Stations

☒ VisibleFilterMove UpMove Down



Facilities Planning Unit

Ad Hoc Reports - Report Viewer

FUSION2

FACILITIES UTILIZATION
SPACE INVENTORY OPTIONS NET

SM Plan with De

CAMPUS: 311-Contra Costa College

Campus Name	Campus Size	Assignable SF	Assignable Stations	Room Count
Contra Costa College	L	247,296	6,797	554

LA PFP FOR: 311-Contra Costa College

Plan Year	Project ID	Project Type	Project Title	Total Funding	Problem	Project Need
2016	20427	Other	Upgrade Campuswide Emergency Alert System	\$170,000.00	Safety Hazard	Install emergency alert devices in classrooms campuswide.
2016	20428	Exterior	Repaint the Knox Center	\$111,194.00	Potential/Future Damage/Cost	Repaint exterior of the building.
2016	20425	Other	Art Building Repairs and Maintenance	\$120,000.00	Potential/Future Damage/Cost	Replace floor coverings, repaint interior and exterior and upgrade spaces for new equipment.
2016	20426	Mechanical	AA Buildig Chiller Retrofit	\$200,000.00	Disruption of Program(s)	Replace chiller. Prop 39 supplement.

CAMPUS: 314-Contra Costa District Office*

Campus Name	Campus Size	Assignable SF	Assignable Stations	Room Count
Contra Costa District Office*	S	16,693	161	27

LA PFP FOR: 314-Contra Costa District Office*

Plan Year	Project ID	Project Type	Project Title	Total Funding	Problem	Project Need
2016	20458	Mechanical	Upgrade 2nd Floor HVAC and Electrical	\$49,758.00	Code Violation	Upgrade mechanical and electrical to meet current code.

CAMPUS: 021-Cuyamaca College

Campus Name	Campus Size	Assignable SF	Assignable Stations	Room Count
Cuyamaca College	L	328,571	6,562	606

LA PFP FOR: 021-Cuyamaca College

Plan Year	Project ID	Project Type	Project Title	Total Funding	Problem	Project Need
2016	20250	Mechanical	LRC HVAC Replacement	\$400,000.00	Disruption of Program(s)	LRC HVAC is at the end of its



CALIFORNIA COMMUNITY COLLEGES



Facilities Planning

QUESTIONS?



CALIFORNIA COMMUNITY COLLEGES

